

WOODMERE AVAILABLE FLOOR PLANS

2 BEDROOM TERRACE APARTMENT: \$1235/MONTH
+\$215 FLAT UTILITY FEE

APARTMENT FEATURES

- Private Balconies and Patios
- Large Floor to Ceiling Windows
- Renovated contemporary kitchens with gas range stoves, full size refrigerators, dishwashers and garbage disposals
- Walk in Closets
- Ceramic Tile at Entrance
- Wall to Wall Carpet
- Digital Cable (Includes 70 Channels & 6 Premium HBO Channels)

UTILITIES INCLUDED

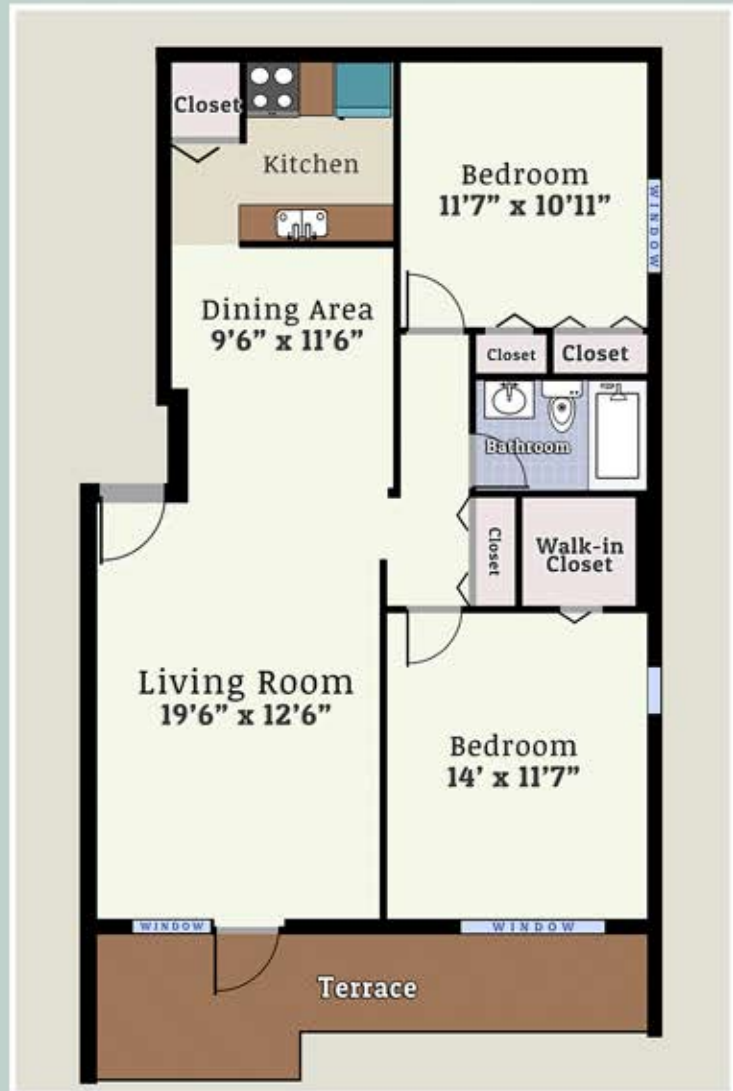
- Electric
- Gas
- Water
- Central Air
- Heat

INTERNET (HOTWIRE)

\$34.99 Each Month

PET FEES

Cat Fee: \$150 (Non-Refundable)
\$15 Extra Per Month



Prices are subject to change



WOODMERE APARTMENTS

8200 HENRY AVE. PHILADELPHIA, PA 19128

PHONE: 215 482-4246 EMAIL: WOODMERE@UCHWEB.COM

Woodmere

SummitPhilly.com